

## Platform Two Axis Servo Positioner

This platform two-axis servo positioner is mainly consists of welding base, rotary frame, AC servo motor, RV precise reducer, rotary support , conductive system, protective cover and electrical control system.

### Structure Briefs:

This platform two-axis servo positioner is mainly consists of whole welding frame, rotary frame, RV precise reducer, AC servo motor, rotary support part, conductive system, protective cover and electrical control system.

The whole welding frame is made by high-quality section, the machining was after stress relief annealing, which ensured the machining accuracy and the use accuracy. Anti-rust appearance paint is beautiful and elegant, and the color can be customized.

Rotary frame is made by high-quality steel section with professional machining. With standard pith tapped hole on the surface for

installing positioning tooling, and it was painted after black oxidation treatment.

The AC servo motor matching the RV reducer can guarantee high rotary stability, high positioning accuracy, long durability and low failure rate.

The conductive mechanism is made in brass, which give perfect conduction. The foundation is whole insulation to protect the servo motor, robot, welding power, etc.

We choose Omron(Japan) PLC to control the positioner and electrical elements are all from famous brand, which ensured the high stability and low failure rate.

### Technical Specification:

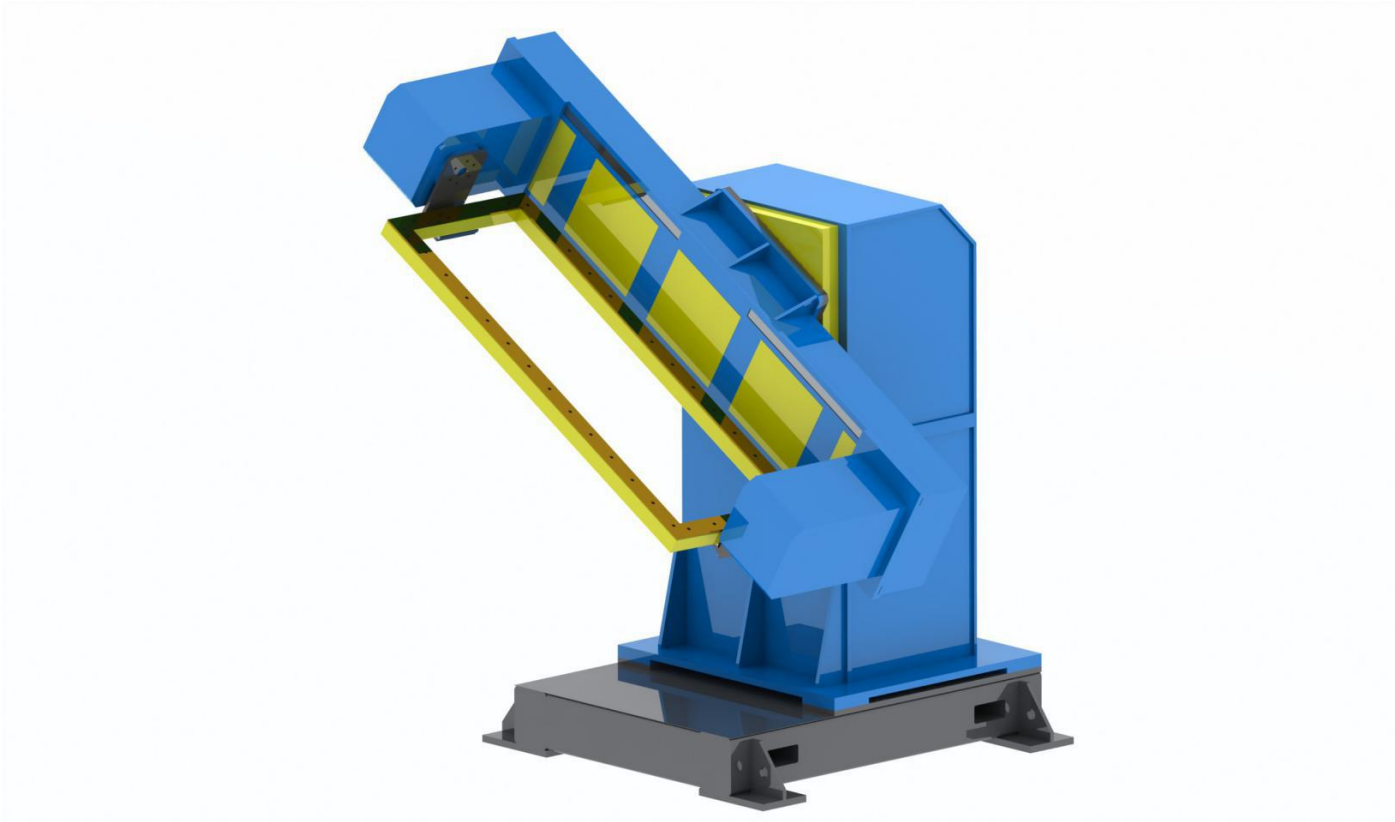
| No. | Item   | DWP-P-200   | DWP-P-500   | DWP-P-1000  |
|-----|--|---|---|---|
| 1   | Rated load                                     | 200kg (within 2 <sup>nd</sup> axis radius R300mm)       | 500kg (within 2 <sup>nd</sup> axis radius R300mm)       | 1000kg (within 2 <sup>nd</sup> axis radius R500mm)      |
| 2   | Standard radius of rotary                      | R400mm  | R400mm  | R600mm  |
| 3   | rotary angle of 1 <sup>st</sup> axis           | ±90°  | ±90°  | ±90°  |
| 4   | rotary angle of 2 <sup>nd</sup> axis           | ±360°   | ±360°   | ±360°   |
| 5   | Rated rotary speed of 1 <sup>st</sup> axis     | 70°/S   | 50°/S   | 15°/S   |
| 6   | Rated rotary speed of 2 <sup>nd</sup> axis     | 70°/S   | 70°/S   | 24°/S   |
| 7   | Repeated positioning accuracy                  | ±0.10mm   | ±0.12mm   | ±0.20mm   |
| 8   | Positioner dimension (L×W×H)                   | 1000mm×550mm×600mm                                      | 1200mm×600mm×750mm                                      | 1500mm×750mm×900mm                                      |
| 9   | Standard 2 <sup>nd</sup> axis rotary disc size | φ500mm  | φ500mm  | φ800mm  |
| 10  | Height of 1 <sup>st</sup> axis rotary center   | 500mm   | 550mm   | 750mm   |
| 11  | Power supply                                   | Three phase 200V ±10% 50Hz (with isolation transformer) | Three phase 200V ±10% 50Hz (with isolation transformer) | Three phase 200V ±10% 50Hz (with isolation transformer) |
| 12  | Insulation grade                               | H   | H   | H   |
| 13  | Weight   | about 300kg   | about 500kg   | about 1000kg  |

## Configuration List :

| No. | Item        | Brand                                 | Quantity |
|-----|-------------|---------------------------------------|----------|
| 1   | Servo motor | Tamagawa                              | 1        |
| 2   | RV reducer  | QinChuan (Nabtesco brand is optional) | 1        |

## Standard Colour of the Equipment:

| No. | Item                                | Color Name    | Color Number |
|-----|-------------------------------------|---------------|--------------|
| 1   | Case body and main body             | Peacock blue  | PB11         |
| 2   | Base                                | Graphite gray | 7026         |
| 3   | Rotating part and cover             | Medium yellow | Y07          |
| 4   | Machined parts and machined surface | Black oxide   |              |



### **C Type Two Axis Welding Positioner**

This C-type two-axis servo positioner consists of whole welding frame, rotary frame, AC servo motor, RV precise reducer, rotary support , conductive system, protective cover and electrical control system.

CRP Welding Robot can maximum synergize with two external-axis .

#### **Structure Briefs:**

This C-type two-axis servo positioner is mainly consists of whole welding frame, rotary frame, RV precise reducer, AC servo motor, rotary support part, conductive system, protective cover and electrical control system.

The whole welding frame is made by high-quality section, the machining was after stress relief annealing, which ensured the machining accuracy and the use accuracy. Anti-rust appearance paint is beautiful and elegant, and the color can be customized.

Rotary frame is made by high-quality steel section with professional machining. With standard pith tapped hole on the surface for installing positioning tooling, and it was painted after black oxidation treatment.

The AC servo motor matching the RV reducer can guarantee high rotary stability, high positioning accuracy, long durability and low failure rate.

The conductive mechanism is made in brass, which give perfect conduction. The foundation is whole insulation to protect the servo motor, robot, welding power, etc.

To assure the quality and working stability, we use Omron (Japan) PLC to control the motions, and electrical components are all from well-known brand.

### Technical Specification:

| No. | Item                                       | DWP-C-200   | DWP-C-500   | DWP-C-1000   |
|-----|--|---|---|--|
| 1   | Rated load                                 | 200kg (within 2 <sup>nd</sup> axis radius R400mm) | 500kg (within 2 <sup>nd</sup> axis radius R400mm) | 1000kg (within 2 <sup>nd</sup> axis radius R600mm) |
| 2   | Standard radius of rotary                  | R400mm  | R400mm  | R600mm   |
| 3   | rotary angle of 1 <sup>st</sup> axis       | ±180°   | ±180°   | ±180°  |
| 4   | rotary angle of 2 <sup>nd</sup> axis       | ±360°   | ±360°   | ±360°  |
| 5   | Rated rotary speed of 1 <sup>st</sup> axis | 50°/S   | 50°/S   | 15°/S  |
| 6   | Rated rotary speed of 2 <sup>nd</sup> axis | 70°/S   | 70°/S   | 70°/S  |
| 7   | Repeated positioning accuracy              | ±0.10mm   | ±0.15mm   | ±0.20mm  |
| 8   | Dimension of the rotary frame (L×W×H)      | 1200mm×600mm×70mm                                 | 1600mm×800mm×90mm                                 | 2000mm×1200mm×90mm                                 |

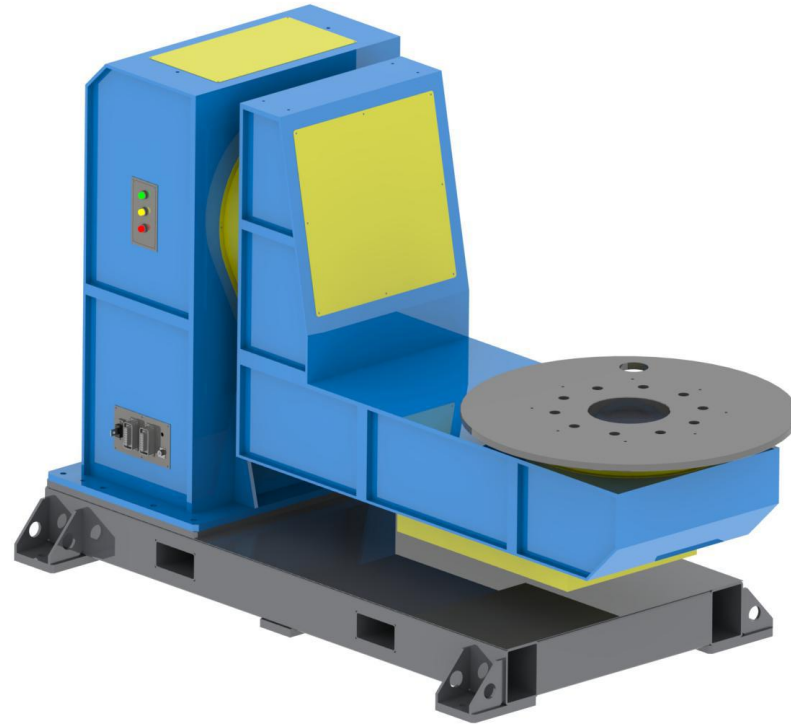
|    |  |   |   |   |
|----|--|---|---|---|
| 9  | Positioner dimension (L×W×H)                 | 2000mm×1100mm×1700mm                                    | 2300mm×1200mm×1900mm                                    | 2700mm×1500mm×2200mm                                    |
| 10 | Height of 1 <sup>st</sup> axis rotary center | 1200mm  | 1350mm  | 1600mm  |
| 11 | Power supply                                 | Three phase 200V ±10% 50Hz (with isolation transformer) | Three phase 200V ±10% 50Hz (with isolation transformer) | Three phase 200V ±10% 50Hz (with isolation transformer) |
| 12 | Insulation grade                             | H   | H   | H   |
| 13 | Weight                                       | about 800kg   | about 1300kg  | about 2000kg  |

### Configuration List :

| No. | Item        | Brand                                 | Quantity |
|-----|-------------|---------------------------------------|----------|
| 1   | Servo motor | Tamagawa                              | 1        |
| 2   | RV reducer  | QinChuan (Nabtesco brand is optional) | 1        |

### Standard Colour of the Equipment:

| No. | Item                                | Color Name    | Color Number |
|-----|-------------------------------------|---------------|--------------|
| 1   | Case body and main body             | Peacock blue  | PB11         |
| 2   | Base                                | Graphite gray | 7026         |
| 3   | Rotating part and cover             | Medium yellow | Y07          |
| 4   | Machined parts and machined surface | Black oxide   |              |
|     |                                     |               |              |



## L Type Two Axis Welding Positioner

This L-type two-axis servo positioner consists of welding base, rotary frame, AC servo motor, RV precise reducer, rotary support , conductive system, protective cover and electrical control system.

### Structure Briefs:

This L-type two-axis servo positioner consists of welding base, rotary frame, RV precise reducer, AC servo motor, rotary support part, conductive system, protective cover and electrical control system.

The whole welding frame is made by high-quality section, the machining was after stress relief annealing, which ensured the machining accuracy and the use accuracy. Anti-rust appearance paint is beautiful and elegant, and the color can be customized.

Rotary frame is made by high-quality steel section with professional machining. With standard pith tapped hole on the surface for installing positioning tooling, and it was painted after black oxidation treatment.

The AC servo motor matching the RV reducer can guarantee high rotary stability, high positioning accuracy, long durability and low failure rate.

The conductive mechanism is made in brass, which give perfect conduction. The foundation is whole insulation to protect the servo motor, robot, welding power, etc.

We choose Omron(Japan) PLC to control the positioner and electrical elements are all from famous brand, which ensured the high stability and low failure rate.

### Technical Specification:

| No. | Item   | DWP-L-500  | DWP-L-1000  | DWP-L-2000  |
|-----|--|--|---|---|
| 1   | Rated load                                   | 500kg (within 2 <sup>nd</sup> axis radius R400mm)      | 1000kg (within 2 <sup>nd</sup> axis radius R600mm)      | 2000kg (within 2 <sup>nd</sup> axis radius R800mm)      |
| 2   | Standard radius of rotary                    | R400mm   | R600mm  | R800mm  |
| 3   | rotary angle of 1 <sup>st</sup> axis         | ±180°  | ±180°   | ±180°   |
| 4   | rotary angle of 2 <sup>nd</sup> axis         | ±360°  | ±360°   | ±360°   |
| 5   | Rated rotary speed of 1 <sup>st</sup> axis   | 50°/S  | 50°/S   | 17°/S   |
| 6   | Rated rotary speed of 2 <sup>nd</sup> axis   | 70°/S  | 70°/S   | 17°/S   |
| 7   | Repeated positioning accuracy                | ±0.10mm  | ±0.10mm   | ±0.20mm   |
| 8   | Positioner dimension (L×W×H)                 | 1500mm×500mm×850mm                                     | 2000mm×750mm×1200mm                                     | 2400mm×900mm×1600mm                                     |
| 9   | Standard 2 <sup>nd</sup> axis rotary disk    | φ800mm   | φ1200mm   | φ1500mm   |
| 10  | Height of 1 <sup>st</sup> axis rotary center | 550mm  | 800mm   | 1000mm  |
| 11  | Power supply                                 | Three phase 200V ±10% 50Hz(with isolation transformer) | Three phase 200V ±10% 50Hz (with isolation transformer) | Three phase 200V ±10% 50Hz (with isolation transformer) |



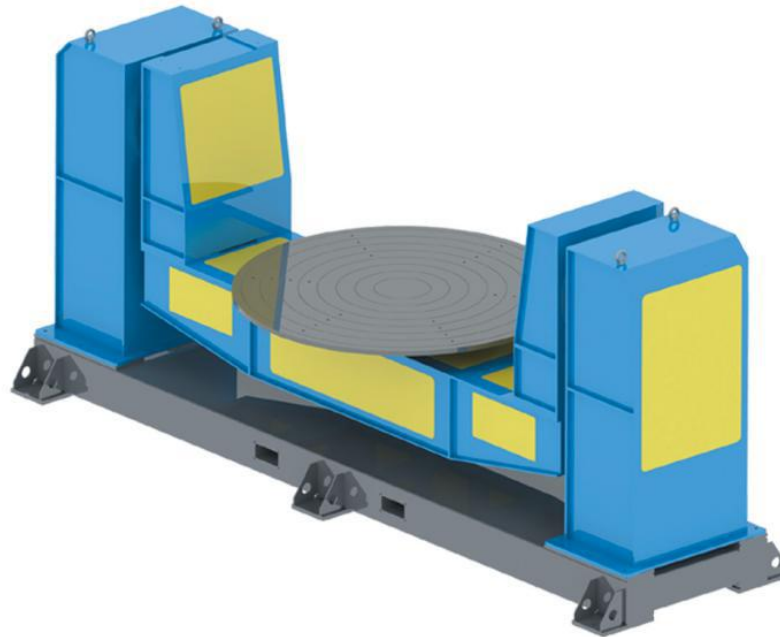
|    |                  |             |              |              |
|----|------------------|-------------|--------------|--------------|
| 12 | Insulation grade | H           | H            | H            |
| 13 | Weight           | about 900kg | about 1600kg | about 2500kg |

### Configuration List :

| No. | Item        | Brand                                 | Quantity |
|-----|-------------|---------------------------------------|----------|
| 1   | Servo motor | Tamagawa                              | 1        |
| 2   | RV reducer  | QinChuan (Nabtesco brand is optional) | 1        |

### Standard Colour of the Equipment:

| No. | Item                                | Color Name    | Color Number |
|-----|-------------------------------------|---------------|--------------|
| 1   | Case body and main body             | Peacock blue  | PB11         |
| 2   | Base                                | Graphite gray | 7026         |
| 3   | Rotating part and cover             | Medium yellow | Y07          |
| 4   | Machined parts and machined surface | Black oxide   |              |
|     |                                     |               |              |



## U Type Two Axis Welding Positioner

This U-type two-axis servo positioner consists of welding base, rotary frame, AC servo motor, RV precise reducer, rotary support , conductive system, protective cover and electrical control system.

### Structure Briefs:

This U-type two-axis servo positioner consists of whole welding frame, rotary frame, RV precise reducer, AC servo motor, rotary support part, conductive system, protective cover and electrical control system.

The whole welding frame is made by high-quality section, the machining was after stress relief annealing, which ensured the machining accuracy and the use accuracy. Anti-rust appearance paint is beautiful and elegant, and the color can be customized.

Rotary frame is made by high-quality steel section with professional machining. With standard pith tapped hole on the surface for installing positioning tooling, and it was painted after black oxidation treatment.

The AC servo motor matching the RV reducer can guarantee high rotary stability, high positioning accuracy, long durability and low failure rate.

The conductive mechanism is made in brass, which give perfect conduction. The foundation is whole insulation to protect the servo motor, robot, welding power, etc.

We choose Omron(Japan) PLC to control the positioner and electrical elements are all from famous brand, which ensured the high stability and low

### Technical Specification:

| No. | Item  | DWP-U-1000   | DWP-U-3000  | DWP-U-5000  |
|-----|---|--|---|---|
| 1   | Rated load                                  | 1000kg (within axis 2 radius R600mm)                   | 3000kg (within axis 2 radius R1500mm)                   | 5000kg (within axis 2 radius R2000mm)                   |
| 2   | Standard radius of rotary                   | R600mm   | R1500mm   | R2000mm   |
| 3   | tilting angle of 1 <sup>st</sup> axis       | ±180°  | ±180°   | ±180°   |
| 4   | rotary angle of 2 <sup>nd</sup> axis        | ±360°  | ±360°   | ±360°   |
| 5   | Rated tilting speed of 1 <sup>st</sup> axis | 17°/S  | 17°/S   | 17°/S   |
| 6   | Rated rotary speed of 2 <sup>nd</sup> axis  | 24°/S  | 17°/S   | 24°/S   |
| 7   | Repeated positioning accuracy               | ±0.15mm  | ±0.20mm   | ±0.25mm   |
| 8   | Positioner dimension (L×W×H)                | 4200mm×700mm×1800mm                                    | 5500mm×900mm×2200mm                                     | 6500mm×1200mm×2600mm                                    |
| 9   | Standard axis 2 rotary disc                 | φ1500mm  | φ1800mm   | φ2000mm   |
| 10  | Height of axis 1 rotary center              | 1500mm   | 1750mm  | 2200mm  |
| 11  | Power supply                                | Three phase 200V ±10% 50Hz(with isolation transformer) | Three phase 200V ±10% 50Hz (with isolation transformer) | Three phase 200V ±10% 50Hz (with isolation transformer) |
| 12  | Insulation grade                            | H  | H   | H   |
| 13  | Weight                                      | about 2200kg   | about 4000kg  | about 6000kg  |

## Configuration List :

| No. | Item        | Brand                                 | Quantity |
|-----|-------------|---------------------------------------|----------|
| 1   | Servo motor | Tamagawa                              | 1        |
| 2   | RV reducer  | QinChuan (Nabtesco brand is optional) | 1        |

## Standard Colour of the Equipment:

| No. | Item                                | Color Name    | Color Number |
|-----|-------------------------------------|---------------|--------------|
| 1   | Case body and main body             | Peacock blue  | PB11         |
| 2   | Base                                | Graphite gray | 7026         |
| 3   | Rotating part and cover             | Medium yellow | Y07          |
| 4   | Machined parts and machined surface | Black oxide   |              |